

# Science and Faith Supplement

—

Michael Williams  
enghelp1906@gmail.com

# Housekeeping and Where We Are Headed

- Session 6 reminder: [enghelp1906@gmail.com](mailto:enghelp1906@gmail.com)
- No question off limits in the realm of theology or apologetics
- Where are we headed
  - 10/19 Science and Faith: Genesis and Biology
  - 10/26 Scripture: Context, Context, Context
  - 11/2 Theodicy: Is God a Moral Monster
  - 11/9 The Resurrection: Additional data and counterarguments
  - 11/16 Q&A

# Introduction and Overview

- There is a philosophical and intellectual history to the origin of the myth of conflict between science and faith.
- I will not be able to cover that, but can discuss in Q&A
- Outline
  - Thinking about the early chapters of Genesis
  - Some evidences and polemics from Biology

# Genesis 1-11



# Thinking About Creation

---

# YEC-Concordist

1. Some Christians have maintained that the world was created in six 24 hour consecutive days
  - a. The total age of the earth is 6,000-10,000 years old based on calculations of the genealogies in Genesis.
  - b. This was likely the predominant view up until the 1600s, but definitely was not the exclusive view.
2. They would point mainly to scripture and to some other natural phenomena as evidence for their position.
3. AIG “Top Ten” list

# OEC-Concordist

1. Other Christians point to the days as long ages based on the other literal meanings of the Hebrew word *yom*
  - a. The only other Hebrew word for a long finite period of time is *olam* and it was not used until after all of the Hebrew scriptures were written.
  - b. They would hold that the earth is billions of years old and that God intervened over time to bring about creation by various means.
2. They would point to a more integrated look at Scripture and the scientific record as evidence for this position.
  - a. A strong push to maintain literal interpretations of scripture.
  - b. A Two Books methodology

# Non-Concordist Interpretations

1. These view Genesis as primarily allegorical.
  - a. The Genesis account has huge theological significance but less or no physical teaching.
  - b. Framework, Temple analogy, ANE apologetic, Kingdom proclamation, etc.
2. The Framework view is actually a nice middle ground approach which focuses heavily on the exegetical evidence that the days form a triad of kingdoms and kings.
  - a. This creates an analogical relationship between the two registers--heavenly and earthly.
  - b. This view is not anti-concordist but takes a more moderate approach.
3. Often times Evolutionary creationists are more comfortable with these positions



# A Strawman

1. It is nonsensical to say that age of the earth arguments are anti-scientific when the arguments began before science existed
2. There are varying interpretations through time of the days in Genesis: Irenaeus, Justin Martyr, Origen, Augustine, Anselm, Newton, Hodge, etc
  - a. It stretches credulity to say that the Bible is dogmatic on the time since creation
3. This is an issue of Christian liberty where you can study and decide for yourself

# The Genesis Flood



# Universally Attested

1. A flood covering the entire Earth is very difficult to account for using general revelation alone.
2. If you hold to this idea with conviction, then it's probably best to argue for the general reliability of Scripture and that this was a miraculous fiat act by God to punish humanity.
3. A general apologetic that works for this view is that flood stories are pervasive through essentially every culture.
  - a. At least 200 stories have been identified.



Atra-Hasis Ark tablet containing “two by two” phraseology dated circa 1800-2000 BC

# An Alternative Model

1. A Local Flood
  - a. The flood was worldwide and not global.
    - i. This means it killed all humans besides Noah's family but did not cover the entire Earth.
    - ii. This is how "worldwide" in the Hebrew is used in the Bible and the flood is qualified in 2 Peter 3:6.
  - b. The Arc came to rest in the Mount Ararat region and the materials were likely used to rebuild civilization
  - c. Local birds and animals were rescued as indicated by the language of the text
2. The bottom line--don't let cartoons dictate your theology

# Genealogies and Long Life Spans

---

# The Nature of Biblical Genealogies

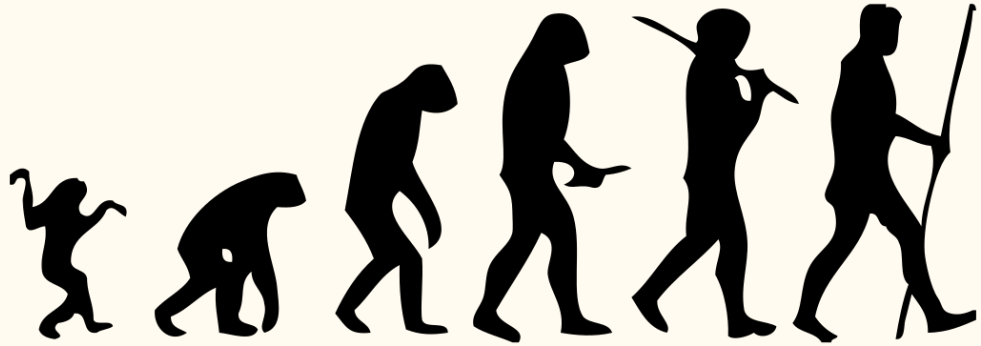
1. We could read them at face value
  1. Other ancient near eastern texts reflect this and there is some data that previous diets, small tweaks to cellular biochemistry, less exposure to heavy metals and carcinogenic agents, and other physical factors could allow this to be possible
2. Close examination reveals a number of gaps and numerical patterns that cannot be coincidence
  1. Often only heads of tribes, clans, and divisions appear with telescoping of multiple generations
  2. Generations are grouped into 7s and 10s
  3. The enormous ages of the pre-flood patriarchs communicate many messages beyond simple calendar year tallies
  4. We read these genealogies through modern Western lenses, “But in fact these genealogies were intended as contemporary statements regarding group and individual identity”--Richter

# Evidences From Biology

---

# A Worldview Issue

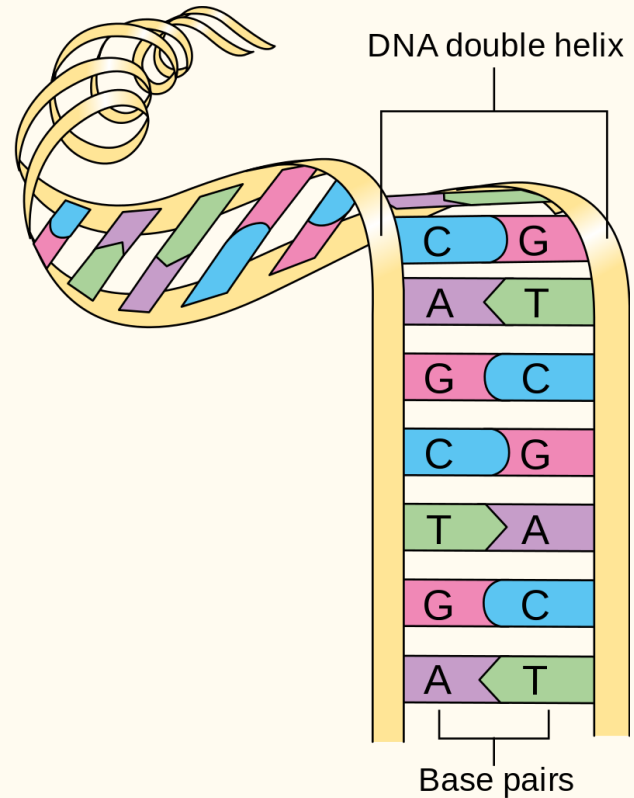
1. Christians differ on the exact methods by which God created.
  - a. It could be fiat, guided evolution, or a combination of both
2. The worldview issue is with trying to point to naturalistic processes for the origin and diversity of life (note that this type of evolution and common descent are not the same).
3. I will offer some positive arguments for the truth of creation and polemics against unguided evolutionary paradigms.





# DNA and Complexity

- In 1953 Watson and Crick elucidated the structure of DNA and made a startling discovery that the structure of DNA allows it to store information in the form of a four character digital code
- DNA harbors specified and functional information.
- We have the culturally universal and spatially ubiquitous experience that all information arises from a mind.
  - There are entire fields of study, such as forensics, that are based on this principle.
  - DNA is information.



# The Intelligent Design Movement

1. Pointing to positive evidence for the inference to an intelligent agent...A modern watchmaker argument
2. As William Dembski notes, systems with high complexity and specificity invariably result from intelligent causes, not from chance or physical-chemical laws.
3. We can trust our intuitions regarding complexity
  1. The so called “levinthal paradox” is an example of secular acknowledgement



# Thinking About Evolution



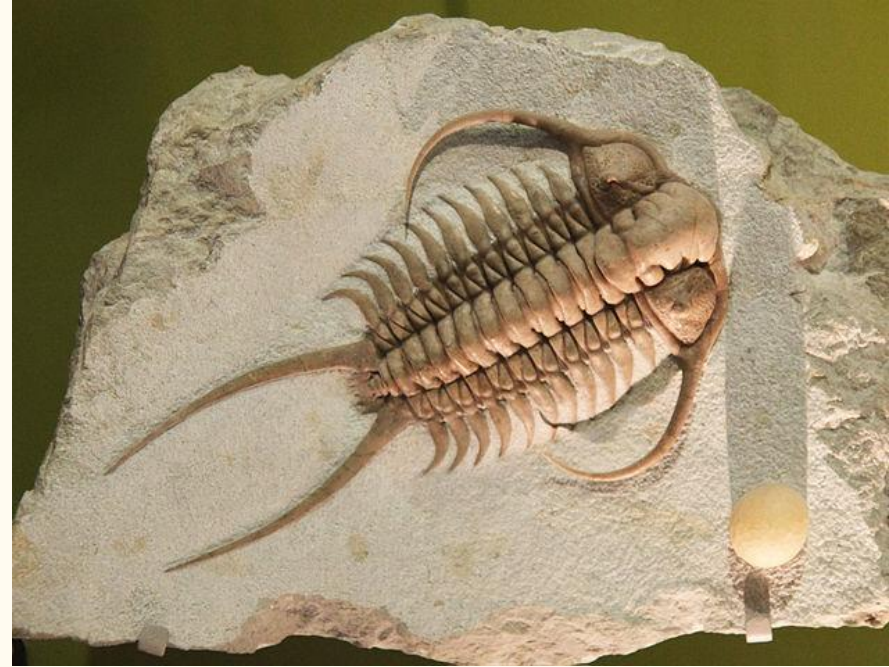
# What Do You Mean By That?

1. All the following have been shown to not demonstrate Darwin's theory in its old or new forms
  - a. The Miller-Urey experiment
  - b. The “tree of life”
  - c. Fossil horses
  - d. The origin of man
  - e. Peppered moths
  - f. Haeckel's embryos
  - g. Archaeopteryx
  - h. Darwin's finches
  - i. Vertebrate limbs

1. What typically happens is people see it does not work in their field, but assume it must work in other fields because scientists are so specialized
  - a. “Thus it is with many biologists: They realize that Darwinian evolution doesn't work [in their field] either”--Jonathan Wells
  - b. “Scientists are very well trained, but poorly educated.”--Fuz Rana

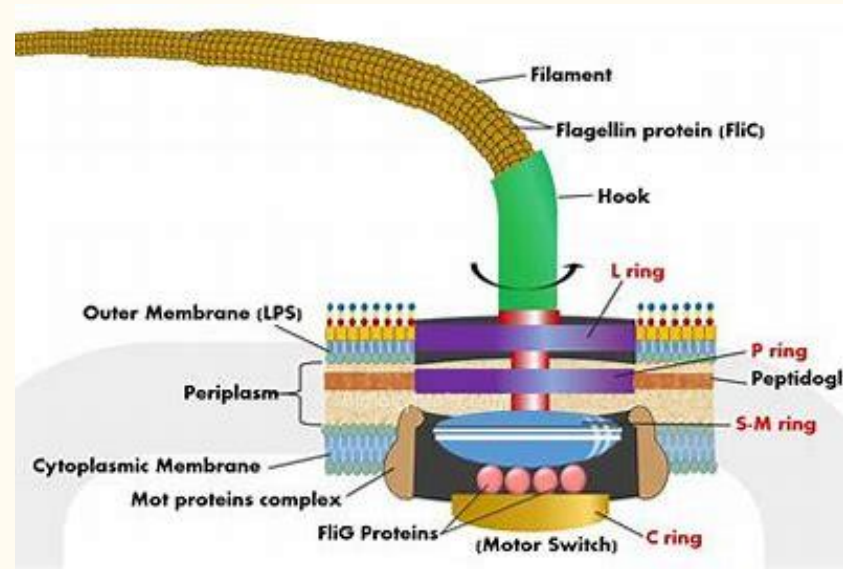
# Third Way Evolution and the Fossil Record

- Third way evolutionary models are gaining prominence (or already are the most prominent) in science communities.
  - 2016 Royal Society meeting “New Trends in Evolutionary Biology”
  - Summary at the 150<sup>th</sup> anniversary of *The Origin of Species*
- The Artifact Hypothesis (The discontinuities in the fossil record exist because we have not found them yet.) has been completely debunked and scientists are moving away from it rapidly.
  - Falsified by the cambrian explosion and others



# Irreducible Complexity and Gradualism

- IC refers to systems that have a set of components which all exist and work simultaneously to complete a complex function (specified complexity).
- Michael Behe is a prominent popularizer of this argument and he has pointed to the complex molecular machinery that makes up cells and bacteria as prime evidence
- This poses a difficulty for Darwinism because, as Darwin himself acknowledged, his theory requires gradualism.
- Ultimately a probability argument, natural selection cannot produce an IC system



# Mass Extinction and Convergence



1. Darwinian models would not predict convergence and theoretical demonstrations have shown convergence does not occur.
2. This is related to mass extinction events in that these would require extremely rapid, multiply occurring evolutionary events resulting in the same phenology (body features).
  - a. Mass Extinction events of the past were rapidly repopulated by the rapid speciation of the past.



